



OPEN ACCESS

Original research

# Effect of prolonged microcirculation time after thrombectomy on the outcome of acute stroke

Yachen Ji ,<sup>1</sup> Bin Shi,<sup>2</sup> Quan Yuan,<sup>2</sup> Kangfei Wu,<sup>1</sup> Jia Fang,<sup>2</sup> Hao Wang,<sup>1</sup> Zhuang Miao,<sup>2</sup> Yi Sun,<sup>1</sup> Xianjun Huang ,<sup>1</sup> Zhiming Zhou<sup>1</sup>

► Additional supplemental material is published online only. To view, please visit the journal online (<http://dx.doi.org/10.1136/jnis-2022-019566>).

<sup>1</sup>Department of Neurology, The First Affiliated Hospital of Wannan Medical College, Wuhu, China

<sup>2</sup>Interventional Treatment Center, The First Affiliated Hospital of Wannan Medical College, Wuhu, China

## Correspondence to

Dr Xianjun Huang, Department of Neurology, The First Affiliated Hospital of Wannan Medical College, Wuhu, China; [doctorhuangxj@hotmail.com](mailto:doctorhuangxj@hotmail.com)

YJ and BS contributed equally.

Received 25 August 2022  
Accepted 7 November 2022  
Published Online First  
23 November 2022

## ABSTRACT

**Background** Although recanalization can be successful, microcirculatory dysfunction is common in acute large vessel occlusive stroke (LVOS). We assessed the microcirculation time by postprocessing software and analyzed its impact on prognosis in patients treated with mechanical thrombectomy (MT).

**Methods** Patients with acute LVOS treated with MT were retrospectively enrolled consecutively. We measured the time to peak (TTP) and cerebral circulation time (CCT) in regions of interest on digital subtraction angiography using syngo iFlow software (Siemens Healthineers, Forchheim, Germany). A modified Rankin score  $\leq 2$  at 90 days was defined as a favorable outcome. Logistic regression was used to analyze the effect of each time parameter on prognosis. Then, we included time parameters in the baseline model to construct receiver operating characteristic (ROC) curves to assess the predictive ability for prognosis.

**Results** A total of 215 patients were finally included. Of them, 118 (54.9%) had a favourable outcome at 90 days. Multivariate analysis showed that the microvascular cerebral circulation time (mCCT) was significantly associated with poor outcomes (odds ratio (OR) 2.061, 95% confidence interval (CI) 1.414 to 3.005  $p < 0.001$ ). The area under the ROC curve was significantly enhanced by including mCCT in the baseline model (0.859 vs 0.829,  $p = 0.016$ , DeLong test).

**Conclusions** The mCCT immediately after recanalization is a powerful predictive factor for 90-day functional prognosis.

## INTRODUCTION

Cerebral circulation time (CCT) is confirmed to be an important parameter of cerebral blood flow reserve, which reflects the hemodynamic differences between symptomatic and asymptomatic carotid stenosis, hyperperfusion after carotid artery stenting and prediction of acute ischemic stroke in patients with middle cerebral artery stenosis.<sup>1–3</sup> It was first proposed by Greitz to be calculated on digital subtraction angiography (DSA) by measuring the time interval from visualization of the intracranial arteries to clouding of the cortical veins.<sup>4</sup> However, CCT lacks a unified evaluation method.<sup>5,6</sup> The microvascular CCT (mCCT) is the time for blood flow to pass through the microvasculature during the entire CCT. Several studies have shown that prolonged mCCT can reflect microcirculatory dysfunction in aneurysmal subarachnoid hemorrhage by different measurement methods.<sup>7,8</sup>

## WHAT IS ALREADY KNOWN ON THIS TOPIC

⇒ Microcirculatory dysfunction is one of the important factors affecting the prognosis of mechanical thrombectomy (MT) treatment. Patients with early identification of microcirculatory dysfunction can benefit from closer monitoring and neuroprotective strategies. However, methods to identify microcirculatory function in MT patients remain limited.

## WHAT THIS STUDY ADDS

⇒ We assessed microvascular cerebral circulation time (mCCT) using syngo iFlow software to measure digital subtraction angiography (DSA) images immediately after MT as an index to observe microcirculatory function. We obtained a significant improvement in predictive power by incorporating mCCT into the baseline model (adjusting for age, National Institutes of Health Stroke Scale (NIHSS) score, Alberta Stroke Program Early CT Score (ASPECT), collateral circulation, reperfusion status, and Trial of ORG 10,172 in Acute Stroke Treatment (TOAST) classification). The mCCT immediately after recanalization is a powerful predictive factor for 90-day functional prognosis.

## HOW THIS STUDY MIGHT AFFECT RESEARCH, PRACTICE OR POLICY

⇒ In clinical practice, the ability of the mCCT to identify microcirculatory dysfunction patients after MT is crucial for physicians and will facilitate the selection of appropriate pharmacological treatment strategies and close monitoring.

This may be caused by microvascular spasm and microvascular obstruction.<sup>9,10</sup> However, studies of CCT in patients with acute large vessel occlusive stroke (LVOS) are less frequent.

Acute LVOS has a high rate of mortality and disability, and prompt opening of the occluded vessel through mechanical thrombectomy (MT) provides a promising treatment for these patients.<sup>11</sup> However, successful recanalization therapy does not always result in successful tissue reperfusion.<sup>12</sup> Animal studies have found that when the occluded middle cerebral artery is recanalized, part of the microcirculation is not reperfused, and the no-reflow phenomenon in the microcirculation after



© Author(s) (or their employer(s)) 2023. Re-use permitted under CC BY-NC. No commercial re-use. See rights and permissions. Published by BMJ.

**To cite:** Ji Y, Shi B, Yuan Q, et al. *J NeuroIntervent Surg* 2023;**15**:1078–1083.

revascularization is also common in the human brain.<sup>12 13</sup> In the presence of an ischemic hemisphere, even if the vessel is opened, the ineffective perfusion of microcirculatory blood flow may significantly reduce the benefit of recanalization therapy.<sup>14</sup> Clinical evidence suggests that restoration of microcirculatory flow is a better predictor of clinical prognosis than reopening an occluded artery.<sup>15</sup> Therefore, we hypothesized that CCT could be an important predictor of prognosis in patients with MT.

Recently, Wang *et al* observed that CCT on DSA after recanalization is a predictor of prognosis in acute stroke.<sup>5</sup> However, the mCCT was not assessed in that study. Microvascular transport time has better predictive value than CCT in the whole brain or arterial phase for delayed cerebral ischemia after subarachnoid hemorrhage.<sup>8</sup> However, it has not been elucidated in LVOS.

Thus, in this study, we assessed whether the CCT of microcirculation changes on DSA immediately after MT can be used as a predictor of prognosis in patients with LVOS who are successfully reperfused, and we further explored the clinical factors of mCCT.

## METHODS

### Study population

A total of 298 patients were seen at Yijishan Hospital for acute anterior circulation LVOS between June 2020 and December 2021. The study was approved by the Ethics Committee of the First Affiliated Hospital of Wannan Medical College (201900039). Patients who met the following criteria were included: (1) pre-stroke modified Rankin Scale (mRS) <2 scores; (2) age >18 years; (3) expanded Thrombolysis in Cerebral Infarction (eTICI) score  $\geq 2$ ; and (4) within 24 hours of known stroke onset. The exclusion criteria for these patients were as follows: (1) 90-day post-operative loss to follow-up; (2) no post-operative imaging follow-up; (3) multivascular occlusion; (4) anterior cerebral artery occlusion; or (5) inability to calculate the CCT due to poor quality or incomplete DSA imaging. A flowchart for inclusion in the study cohort is shown in online supplemental figure 1.

### Baseline variables

Our baseline variables regarding demographic characteristics and clinical information were retrospectively and included sex, age, medical history (hypertension, diabetes, atrial fibrillation), National Institute of Health Stroke Scale (NIHSS) score, Alberta Stroke Program Early CT (ASPECT) score, the Trial of ORG 10,172 in Acute Stroke Treatment (TOAST) classification, and bridging treatment with intravenous thrombolysis.

Surgical information, namely, the time from onset to puncture (OTP), time from onset to recanalization (OTR), anesthesia method, and approaches of procedure was recorded by the surgeon.

The reperfusion classification was assessed by the eTICI score.<sup>16</sup> Successful reperfusion was classified as eTICI 2b50, eTICI 2b67, eTICI 2c or eTICI 3. Poor collateral circulation was defined as collateral filling  $\leq 50\%$  of the occluded territory, while good collateral circulation was defined as collateral filling >50% of the occluded territory.<sup>17</sup>

For all enrolled subjects, the imaging characteristics were evaluated by two neurologists/interventionalists who were blinded to the clinical information. In case of disagreement, the third expert made the final decision through consultation.

### Cerebral circulation time measurement

All patients underwent standard cerebral angiography (transfemoral access) immediately after MT, with an 8 Fr catheter located in the extracranial C2-C4 segment of the internal carotid artery. Six millilitres of contrast agent (iohexol 300, GE Healthcare, Japan) was mechanically injected at a flow rate of 4 mL/s. The 2D DSA series was used at a rate of 4 frames per second to acquire images in anterior-posterior and lateral positions at the beginning of contrast agent injection. This is a routine task in our department. DSA images were transferred to the workstation (*syngo* X-Workplace VB21; Siemens Healthineers) in Digital Imaging and Communications in Medicine (DICOM) format and converted to color-coded images using *syngo* iFlow software (Siemens Healthineers, Forchheim, Germany) to measure time-density profiles.<sup>18</sup>

The regions of interest (ROIs) were placed in the intravenous vertical portion of the internal carotid artery (ROI<sub>C5</sub>), the cortical segment of the rolandic artery (ROI<sub>M4</sub>), and the rolandic vein (ROI<sub>VR</sub>) to calculate the time-density profile.<sup>7</sup> The time to peak (TTP) on the time-density curve for each region of interest was recorded as TTP<sub>C5</sub>, TTP<sub>M4</sub>, and TTP<sub>VR</sub>. CCT is defined as the difference in the time to peak intensity between ROIs.<sup>2</sup> (1) CCT<sub>C5-M4</sub> = TTP<sub>M4</sub> - TTP<sub>C5</sub>; (2) CCT<sub>C5-VR</sub> = TTP<sub>VR</sub> - TTP<sub>C5</sub>; (3) CCT<sub>M4-VR</sub> = TTP<sub>VR</sub> - TTP<sub>M4</sub> (referred to as the microvascular cerebral circulation time (mCCT)) (figure 1).

### Follow-up

The intracerebral hemorrhage (ICH) events analyzed in this study were classified according to the European Cooperative Acute Stroke Study III criteria for any ICH, parenchymal hematoma, and symptomatic ICH within 24 hours after MT.<sup>19</sup> Clinical or telephone follow-up was performed at 90 days of onset; and a favorable functional outcome was defined as an mRS score of 0–2, whereas a poor functional outcome was defined as an mRS score of 3–6.

### Statistical analysis

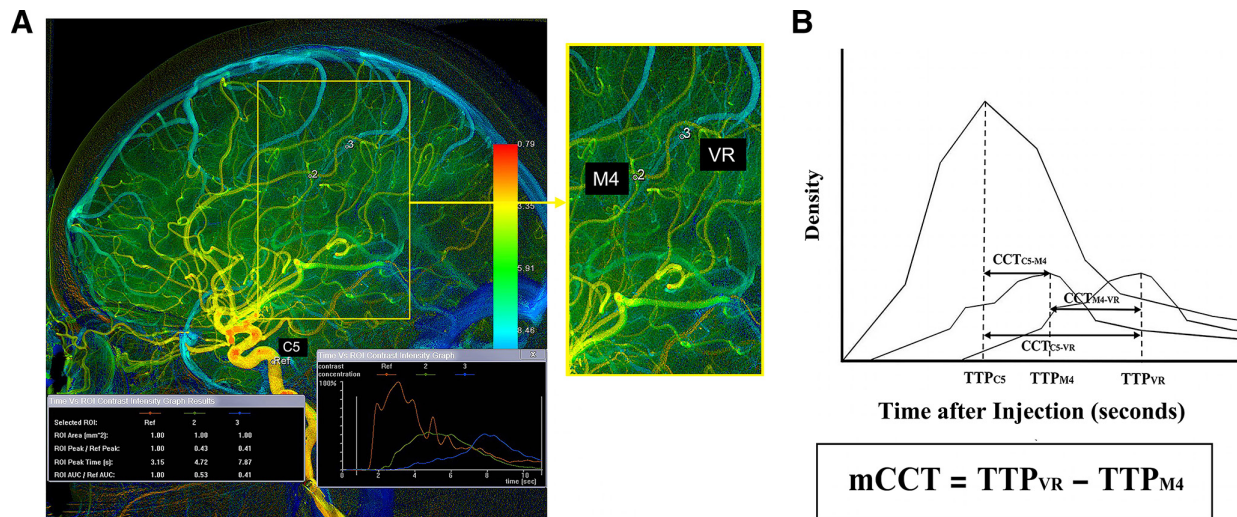
Patients were divided into the favorable and poor outcome groups, ICH and non-ICH group. The distribution of continuous variables was assessed by the Kolmogorov-Smirnov test. Normally distributed continuous variables are presented as the means (standard deviation), and non-normally distributed continuous variables are presented as the medians (interquartile range). Categorical variables are presented as percentages. Continuous variables were analyzed using the t test or the Mann-Whitney U test. Differences in categorical variables were analyzed using the  $\chi^2$  test and the Fisher's exact test as appropriate. Variables with  $p < 0.05$  in the univariate analysis were included in the multivariate analysis.

Receiver operating characteristic (ROC) analysis was used to assess the ability of TTP<sub>VR</sub>, CCT<sub>C5-VR</sub>, and mCCT to distinguish between 90-day favorable and poor outcomes among patients. The DeLong test was used to compare the area under the curve of each model with that of the baseline model (adjusting for age, NIHSS score, ASPECT score, collateral circulation, reperfusion status, and TOAST classification). To explore the factors influencing mCCT, mCCT was divided into the high mCCT group and the low mCCT group based on the cut-off value of the ROC curve. A  $p$  value <0.05 was considered statistically significant. Statistical analysis was performed using SPSS 26.0 (IBM, Armonk, NY, USA).

## RESULTS

### Patient baseline characteristics

During the study period, a total of 298 patients with anterior circulation LVOS were enrolled, and 215 were eventually



**Figure 1** Measurement of time to peak (TTP) and cerebral circulation time (CCT). (A) Regions of interest (ROIs) were set in color-coded images using syngo iFlow software (B) Time-density curve.  $CCT_{C5-M4}$ : cerebral circulation time from the vertical intracavernous portion of the internal carotid artery to the cortical segment of the rolandic artery;  $CCT_{C5-VR}$ : cerebral circulation time from the vertical intracavernous portion of the internal carotid artery to the rolandic vein;  $CCT_{M4-VR}$ : cerebral circulation time from the cortical segment of the rolandic artery to the rolandic vein;  $TTP_{C5}$ : time to peak of the vertical intracavernous portion of the internal carotid artery,  $TTP_{M4}$ : time to peak of the cortical segment of the rolandic artery;  $TTP_{VR}$ : time to peak of the rolandic vein.

included in this study. The baseline characteristics of the patients are shown in table 1. The median age of all patients was 70 (62–76) years, and 125 (58.1%) were male. Of the patients, 156 (72.6%) patients had an onset within 6 hours and 59 (27.4%) patients had an onset within 6–24 hours. A total of 127 (59.1%) had a history of hypertension, 22 (10.2%) had a history of type 2 diabetes, and 124 (57.7%) had a history of atrial fibrillation. The median NIHSS and ASPECT scores at admission were 13 (11–18) and 9 (7–10), respectively. Of the included patients, 28 (13.0%) had a reperfusion status of eTICI 2b50, 27 (12.6) had a reperfusion status of eTICI 2b67, 33 (15.3) had a reperfusion status of eTICI 2c, and 127 (59.1%) had a reperfusion status of eTICI 3. A total of 118 (54.9%) patients had a favorable outcome (mRS < 2) at the 90-day follow-up. The medians of  $TTP_{C5}$ ,  $TTP_{M4}$ , and  $TTP_{VR}$  were 2.6 (2.3–2.9)s, 4.2 (3.7–4.8)s, and 7.9 (7.2–8.9)s, respectively. The medians of  $CCT_{C5-M4}$ ,  $CCT_{C5-VR}$ , and mCCT were 1.6 (1.0–2.3)s, 5.2 (4.4–6.3)s, and 3.6 (3.0–4.4)s, respectively.

#### Assessment of TTP and CCT in relation to outcomes

After adjusting for variables with  $p < 0.05$  in the univariate analysis (age, NIHSS score, ASPECT score, collateral circulation, reperfusion status, and TOAST classification), multivariate analysis showed that  $TTP_{VR}$  (OR 1.425, 95% CI 1.078 to 1.882,  $p = 0.013$ ),  $CCT_{C5-VR}$  (OR 1.475, 95% CI 1.124 to 1.936,  $p = 0.005$ ), and mCCT (OR 2.061, 95% CI 1.414 to 3.005,  $p < 0.001$ ) were significantly associated with poor functional outcome, while  $TTP_{C5}$ ,  $TTP_{M4}$ , and  $CCT_{C5-M4}$  were not significantly associated with outcome in univariate and multifactorial analyses (table 2). Therefore, we used ROC to assess the predictive ability of  $TTP_{VR}$ ,  $CCT_{C5-VR}$  and mCCT on outcome.

#### Predictive ability of mCCT for outcomes

For the prediction of outcome, the areas under the curve for  $TTP_{VR}$ ,  $CCT_{C5-VR}$ , and mCCT were 0.637 (95% CI 0.561 to 0.712,  $p < 0.001$ ), 0.664 (95% CI 0.590 to 0.738,  $p < 0.001$ ), and 0.708 (95% CI 0.638 to 0.777,  $p < 0.001$ ), respectively. The area

under the curve for the baseline model was 0.829 (95% CI 0.774 to 0.885,  $p < 0.001$ ). After  $TTP_{VR}$ ,  $CCT_{C5-VR}$ , and mCCT were incorporated into the baseline model to construct the ROC, the area under the curve increased to 0.838, 0.843, and 0.859, respectively, and only mCCT was significantly different from the baseline model ( $p = 0.016$ , DeLong test) (table 3).

#### Influencing factors of mCCT

To assess the factors influencing mCCT, we dichotomized mCCT according to the ROC cut-off value of 3.68. OTP and OTR were utilized in model 1 and model 2 and included other variables with a  $p < 0.05$  in the univariate analysis, such as reperfusion status and intravenous thrombolysis. Multivariate analysis showed that a higher reperfusion grade was negatively associated with the occurrence of microcirculatory impairment in both model 1 (eTICI 3: eTICI 2b50 OR 0.233, 95% CI 0.097 to 0.563,  $p = 0.001$ ; eTICI 2c: eTICI 2b50 OR 0.285, 95% CI 0.098 to 0.833,  $p = 0.022$ ) and model 2 (eTICI 3: eTICI 2b50 OR 0.227, 95% CI 0.094 to 0.548,  $p = 0.001$ ; eTICI 2c: eTICI 2b50 OR 0.285, 95% CI 0.098 to 0.831,  $p = 0.022$ ) (online supplemental tables S1 and S2).

#### The relationship between ICH and mCCT

Any ICH and parenchymal hematoma were more common in patients with prolonged mCCT (32.3% vs 18.9,  $p = 0.024$ ; 15.1% vs 6.6%,  $p = 0.042$ ), while symptomatic ICH was not significantly different (online supplemental table S1). In the univariate analysis, mCCT was higher in patients with any ICH (3.9 [3.1–4.7] vs 3.4 [2.9–4.2],  $p = 0.025$ ) and parenchymal hematoma (4.2 [3.0–4.5] vs 3.4 [3.0–4.4],  $p = 0.093$ ). When the variables with  $p < 0.05$  by univariate analysis were included in the multivariate analysis, mCCT was not significantly associated with any ICH (OR 1.103, 95% CI 0.796 to 1.528,  $p = 0.556$ ) or parenchymal hematoma (OR 1.085, 95% CI 0.708 to 1.661,  $p = 0.708$ ) (online supplemental tables S3 and S4).

#### DISCUSSION

In this study, we analyzed the effects of different periods of CCT and TTP on prognosis. We found that  $TTP_{VR}$ ,  $CCT_{C5-VR}$  and

**Table 1** Baseline clinical characteristics of patients with favorable and poor outcome groups

Variables	ALL (n=215)	90d-mRS≤2 (n=118)	90d-mRS>2 (n=97)	P-value
Demographic characteristics				
Age, y, median (IQR)	70(62, 76)	67(58, 75)	73(66, 77)	<0.001
Male, n (%)	125 (58.1)	76 (64.4)	49 (50.5)	0.052
Past Medical History, n (%)				
Hypertension	127 (59.1)	63 (53.4)	64 (66.0)	0.071
Diabetes mellitus	22 (10.2)	10 (8.5)	12 (12.4)	0.374
Atrial fibrillation	124 (57.7)	54 (45.8)	70 (72.7)	<0.001
Clinical data				
Admission SBP, median (IQR)	152(137, 169)	152(137, 168)	152(140, 170)	0.378
Admission DBP, median (IQR)	84(75, 93)	84(76, 93)	83(75, 92)	0.552
Admission NIHSS, median, (IQR)	13(11, 18)	12(10, 16)	16(12, 19)	<0.001
Admission ASPECT, median, (IQR)	9 (7, 10)	9 (8, 10)	7 (5, 9)	<0.001
IV-rtPA, n (%)	32 (14.9)	18 (15.3)	14 (14.4)	1
Occlusion site, n (%)				0.094
ICA	91 (42.3)	42 (35.6)	49 (50.5)	
MCA-M1	107 (49.8)	66 (55.9)	41 (42.3)	
MCA-M2	17 (7.9)	10 (8.5)	7 (7.2)	
TOAST type, n (%)				0.002
LAA	57 (26.5)	38 (32.2)	19 (19.6)	
CE	133 (61.9)	61 (51.7)	72 (74.2)	
Others	25 (11.6)	19 (16.1)	6 (6.2)	
Procedure process				
OTP, median (IQR)	300(220, 390)	290(210, 360)	312(225, 420)	0.097
OTR, median (IQR)	358(270, 450)	345(270, 421)	364(274, 506)	0.166
Collateral, n (%)				<0.001
poor	67 (31.2)	21 (17.8)	46 (47.4)	
good	148 (68.8)	97 (82.2)	51 (52.6)	
First Attempt Approach, n (%)				0.078
Stent retriever	59 (27.4)	39 (33.1)	20 (20.6)	
Direct aspiration	102 (47.4)	47 (39.8)	55 (56.7)	
Stent retriever+aspiration	13 (6.0)	7 (5.9)	6 (6.2)	
Balloon/stenting angioplasty	41 (19.1)	25 (21.2)	16 (16.5)	
eTICI				0.005
2b50 (50–66%)	28 (13.0)	9 (7.6)	19 (19.6)	
2b67 (67–89%)	27 (12.6)	10 (8.5)	17 (17.5)	
2c	33 (15.3)	19 (16.1)	14 (14.4)	
3	127 (59.1)	80 (67.8)	47 (48.5)	
TTP <sub>CS</sub> , sec, median (IQR)	2.6 (2.3, 2.9)	2.6 (2.4, 2.9)	2, 6 (2.1, 2.9)	0.037
TTP <sub>M4</sub> , sec, median (IQR)	4.2 (3.7, 4.8)	4.3 (3.9, 4.8)	4.1 (3.6, 4.7)	0.16
TTP <sub>VR</sub> , sec, median (IQR)	7.9 (7.2, 8.9)	7.8 (7.0, 8.4)	8.2 (7.6, 9.4)	0.001
CCT <sub>CS-M4</sub> , sec, median (IQR)	1.6 (1.0, 2.3)	1.6 (1.1, 2.4)	1.6 (1.0, 2.3)	0.679
CCT <sub>CS-VR</sub> , sec, median (IQR)	5.2 (4.4, 6.3)	5.0 (4.2, 5.8)	5.8 (4.7, 6.8)	<0.001
CCT <sub>M4-VR</sub> , sec, median (IQR)	3.6 (3.0, 4.4)	3.3 (2.9, 3.9)	4.2 (3.3, 4.9)	<0.001

ASPECT, Alberta Stroke Program Early CT; CCT<sub>CS-M4</sub>, cerebral circulation time from the vertical intracavernous portion of the internal carotid artery to the cortical segment of the rolandic artery; CCT<sub>CS-VR</sub>, cerebral circulation time from the vertical intracavernous portion of the internal carotid artery to the rolandic vein; CCT<sub>M4-VR</sub>, cerebral circulation time from the cortical segment of the rolandic artery to the rolandic vein; CE, cardioembolic; DBP, diastolic blood pressure; eTICI, expanded Thrombolysis in Cerebral Infarction; ICA, internal carotid artery; IQR, interquartile range; IV-rtPA, intravenous alteplase; LAA, large-artery atherosclerosis; MCA-M1, M1 segment of the middle cerebral artery; MCA-M2, M2 segment of the middle cerebral artery; mRS, modified Rankin Scale; NIHSS, National Institutes of Health Stroke Scale; OTP, onset-to-puncture time; OTR, onset-to-reperfusion time; SBP, systolic blood pressure; SD, standard deviation; TOAST, the Trial of ORG 10172 in Acute Stroke Treatment; TTP<sub>CS</sub>, time to peak of the vertical intracavernous portion of the internal carotid artery; TTP<sub>M4</sub>, time to peak of the cortical segment of the rolandic artery; TTP<sub>VR</sub>, time to peak of the rolandic vein.

**Table 2** Univariable and multivariable logistic regression analyses for mRS>2 at 90 days

Independent variable	Unadjusted OR (95% CI)	P-value	Aadjusted OR (95% CI)	P-value
mRS>2 at 90 days				
TTP <sub>CS</sub> <sup>a</sup>	0.614 (0.349 to 1.077)	0.089	0.704 (0.352 to 1.409)	0.322
TTP <sub>M4</sub> <sup>a</sup>	0.789 (0.577 to 1.104)	0.173	0.798 (0.540 to 1.179)	0.257
TTP <sub>VR</sub> <sup>a</sup>	1.487 (1.184 to 1.867)	0.001	1.425 (1.078 to 1.882)	0.013
CCT <sub>CS-M4</sub> <sup>a</sup>	0.934 (0.662 to 1.319)	0.700	0.877 (0.576 to 1.334)	0.539
CCT <sub>CS-VR</sub> <sup>a</sup>	1.570 (1.253 to 1.967)	<0.001	1.475 (1.124 to 1.936)	0.005
CCT <sub>M4-VR</sub> <sup>a</sup>	2.223 (1.619 to 3.052)	<0.001	2.061 (1.414 to 3.005)	<0.001

a: adjusted for age, NIHSS score, ASPECT score, collateral circulation, reperfusion status, and TOAST classification  
 CCT<sub>CS-M4</sub>: cerebral circulation time from the vertical intracavernous portion of the internal carotid artery to the cortical segment of the rolandic artery; CCT<sub>CS-VR</sub>: cerebral circulation time from the vertical intracavernous portion of the internal carotid artery to the rolandic vein; CCT<sub>M4-VR</sub>: cerebral circulation time from the cortical segment of the rolandic artery to the rolandic vein; mRS, modified Rankin Scale; TTP<sub>CS</sub>: time to peak of the vertical intracavernous portion of the internal carotid artery; TTP<sub>M4</sub>: time to peak of the cortical segment of the rolandic artery; TTP<sub>VR</sub>: time to peak of the rolandic vein.

mCCT were the factors independently associated with 90-day functional independence. We included TTP<sub>VR</sub>, CCT<sub>CS-VR</sub>, and mCCT in the baseline model to construct the ROC to assess the predictive ability on prognosis. The area under the curve was enhanced in all cases, but only mCCT was significantly different from the baseline model. Furthermore, we found that a higher eTICI classification was associated with a shorter mCCT.

CCT was first proposed by Greitz to be calculated on DSA by measuring the time interval from visualization of the intracranial arteries to clouding of the cortical veins.<sup>4</sup> Then, several studies assessed the CCT via a different method.<sup>5 6</sup> However, CCT lacks a unified evaluation method. Recently, Philipp Göllitz *et al* showed that the microcirculatory transit time has more advantages than the other periods of CCT.<sup>8</sup> Thus, we used post-processing software that subdivided the different measurement points of TTP and different stages of CCT.<sup>7 18</sup> We found that TTP<sub>VR</sub>, CCT<sub>CS-VR</sub>, and mCCT were all factors independently associated with 90-day functional independence. However, only mCCT can significantly improve the prediction ability of the baseline prediction model. Our results are similar to those of a previous study.<sup>7 8</sup> Furthermore, we are the first to apply mCCT to the clinical evaluation of patients with MT.

We assessed mCCT using syngo iFlow software to measure DSA images immediately after MT as an index to observe microcirculatory function. This method is more objective than previous methods,<sup>5</sup> and the evaluation consistency is high. In addition, this method is also applicable to non-Siemens systems

(such as Hamamatsu Photonics Co., Ltd).<sup>7</sup> Thus, we present a convenient, rapidly accessible post-operative method for reflecting microcirculatory dysfunction.

Several previous studies have shown that restoring reperfusion of the microcirculation plays a crucial role in acute stroke.<sup>20 21</sup> However, most of these observations are based on animal experiments. Recently, Bai *et al* found that optimal tissue reperfusion was associated with a favorable prognosis by analysing preoperative and post-operative CT perfusion images.<sup>22</sup> This result suggests that microcirculatory function may be another important observation in addition to recanalization status.<sup>23</sup> Our study provides a new method for assessing microcirculatory function by measuring microcirculatory transit time after MT. Our data show that mCCT is a critical predictor of the 90-day functional outcome. This finding confirms recent findings and emphasizes the importance of restoring microcirculatory function in acute stroke.<sup>22 24</sup>

According to this result, we consider that the CCT from the cortical segment of the rolandic artery to the rolandic vein correlates with the function of the microcirculation. This is consistent with the findings observed by Masato Naraoka *et al* in subarachnoid hemorrhage.<sup>7</sup> Microvascular injury plays a key role in tissue survival after recanalization by disrupting the integrity of the blood-brain barrier and promoting microcirculatory obstruction.<sup>21</sup> Previous clinical and animal studies have shown that both microthrombosis and microvascular spasm occur in the ultra-early and subacute phases.<sup>13 24 25</sup> Under hypoxic conditions, the lack of ATP to pump intracellular Ca<sup>+</sup> leads to the activation of contractile mechanisms.<sup>26</sup> In addition, pericyte injury exacerbates microvascular spasms, and the narrow capillary lumen is filled with stagnant red blood cells, leukocytes, and fibrin platelet deposits and forms microthrombi.<sup>27</sup> Therefore, the flow of blood through the microcirculation is slowed down, even to the point of “no flow” regions. On imaging, it was observed that despite successful revascularization, infarct growth continued to occur.<sup>28</sup> This may be due to incomplete restoration of microcirculatory blood flow that may cause ongoing tissue damage even when semi-dark tissue is still present to recanalize the occluded vessel. The results of this study suggest that mCCT may be an important predictor of prognosis after revascularization.

In exploring the factors influencing mCCT, we found that the degree of reperfusion was closely related to microcirculatory dysfunction. Tan *et al* showed that a higher percentage of tissue optimal reperfusion was obtained with an eTICI score of 2c or 3 than with a score of 2b (eTICI score of 2b, 50.0%; eTICI score of 2c, 80.0%; and eTICI score of 3, 81.3%).<sup>23</sup> This is consistent with our findings that optimal microcirculation reperfusion occurs at a higher rate in patients with higher reperfusion grades (eTICI score of 2b50, 32.1%; eTICI score of 2b67, 22.2%; eTICI score of 2c, 63.6%; and eTICI score of 3, 67.7%). This may explain why TICI 3/2c had a better clinical outcome than

**Table 3** Predictive value of time to peak and cerebral circulation time on outcome

Independent variable	Area under curve (95% CI)	P-value	Sensitivity	Specificity	P-value with DeLong's test
Baseline model <sup>a</sup>	0.829 (0.774 to 0.885)	<0.001	0.650	0.881	Ref.
TTP <sub>VR</sub> +Baseline model	0.838 (0.783 to 0.892)	<0.001	0.701	0.873	0.365
CCT <sub>CS-VR</sub> +Baseline model	0.843 (0.789 to 0.897)	<0.001	0.732	0.848	0.168
mCCT+Baseline model	0.859 (0.809 to 0.910)	<0.001	0.835	0.754	0.016

a: Baseline model adjusted for age, NIHSS score, ASPECT score, collateral circulation, reperfusion status, and TOAST classification  
 CCT<sub>CS-VR</sub>: cerebral circulation time from the vertical intracavernous portion of the internal carotid artery to the rolandic vein; mCCT, microvascular cerebral circulation time; TTP<sub>VR</sub>: time to peak of the rolandic vein.

TICI 2b in a previous study.<sup>29</sup> We consider that mCCT could be another complementary marker in addition to recanalization status in the prognosis of MT patients.

In addition, bridging treatment with intravenous thrombolysis was also associated with microcirculatory dysfunction in a univariate analysis. However, this result was not reproduced in the multivariate analysis. Interestingly, in the CHOICE trial, treatment with alteplase after MT may have improved patient prognosis by improving microcirculatory blood flow compared with placebo.<sup>30</sup> This may be due to some possible physiological differences in the use of thrombolytic drugs before and after reperfusion therapy. Notably, by measuring mCCT, we can screen the patients with impaired microcirculatory blood flow after MT. This approach could provide a rapid selection method for those requiring post-operative thrombolytic drug therapy and may be an interesting clinical practice. In addition, for the efficacy of different thrombolytic drugs in bridging therapy, mCCT may be an important tool in future assessment methods.

Furthermore, we found that prolonged mCCT was more common in patients with any ICH and parenchymal hematoma, whereas mCCT was not significant in the multivariate analysis of any ICH and parenchymal hematoma. This may have been influenced by the small sample size and low hemorrhagic transformation rate. In future studies, we will evaluate the relationship between mCCT and the blood-brain barrier by follow-up MRI with dynamic susceptibility contrast-enhanced perfusion-weighted imaging.<sup>24</sup>

## LIMITATION

Our study has some limitations. First, our study is a small-sample-size single-center retrospective study, which is inevitably susceptible to the effects of selection bias. Second, we did not perform healthy-side vessel control as in previous studies because there is no uniform standard in our center for the position of the catheter tap end during healthy-side angiography.<sup>5</sup> This may have led to our results being influenced by individual differences. In addition, due to a retrospective study, infarct volume parameters were not obtained, although mCCT may affect infarct volume growth. Multicenter prospective studies should be conducted to confirm our results.

## CONCLUSION

The mCCT on DSA immediately after recanalization, which may reflect microcirculatory function, has certain predictive value for 90-day functional prognosis. A lower eTICI classification was associated with microcirculatory dysfunction. Future studies could evaluate whether patients with prolonged mCCT may benefit from closer monitoring and neuroprotective strategies.

**Contributors** YCJ, BS, XJH, ZMZ contributed to the study concept and design. HW, YS, KFW, YCJ contributed to acquisition and analysis of data. BS, QY, ZM, JF contributed to image review and drafting figures of the manuscript. YCJ, BS contributed to drafting the text. XJH is responsible for the overall content as guarantor.

**Funding** This work was supported by the Natural Science Research Projects in Anhui Universities (No. KJ2021A0843) and the Scientific Research Fund Project for Talent Introduction of Yijishan Hospital, Wannan Medical College in China (No. YR202210).

**Competing interests** None declared.

**Patient consent for publication** Not applicable.

**Provenance and peer review** Not commissioned; externally peer reviewed.

**Data availability statement** Data are available upon reasonable request.

**Supplemental material** This content has been supplied by the author(s). It has not been vetted by BMJ Publishing Group Limited (BMJ) and may not

have been peer-reviewed. Any opinions or recommendations discussed are solely those of the author(s) and are not endorsed by BMJ. BMJ disclaims all liability and responsibility arising from any reliance placed on the content. Where the content includes any translated material, BMJ does not warrant the accuracy and reliability of the translations (including but not limited to local regulations, clinical guidelines, terminology, drug names and drug dosages), and is not responsible for any error and/or omissions arising from translation and adaptation or otherwise.

**Open access** This is an open access article distributed in accordance with the Creative Commons Attribution Non Commercial (CC BY-NC 4.0) license, which permits others to distribute, remix, adapt, build upon this work non-commercially, and license their derivative works on different terms, provided the original work is properly cited, appropriate credit is given, any changes made indicated, and the use is non-commercial. See: <http://creativecommons.org/licenses/by-nc/4.0/>.

## ORCID iDs

Yachen Ji <http://orcid.org/0000-0003-2279-4457>

Xianjun Huang <http://orcid.org/0000-0003-2646-982X>

## REFERENCES

- Hu Y-S, Guo W-Y, Lee I-H, *et al*. Prolonged cerebral circulation time is more associated with symptomatic carotid stenosis than stenosis degree or collateral circulation. *J Neurointerv Surg* 2018;10:476–80.
- Yamauchi K, Enomoto Y, Otani K, *et al*. Prediction of hyperperfusion phenomenon after carotid artery stenting and carotid angioplasty using quantitative DSA with cerebral circulation time imaging. *J Neurointerv Surg* 2018;10:576–9.
- Chen Z, Li M, Wu Z, *et al*. Cerebral circulation time is a potential predictor of disabling ischemic cerebrovascular events in patients with Non-disabling middle cerebral artery stenosis. *Front Neurol* 2021;12:653752.
- Greitz T. A radiologic study of the brain circulation by rapid serial angiography of the carotid artery. *Acta Radiol Suppl* 1956;140:1–123.
- Wang J-Q, Wang Y-J, Qiu J, *et al*. Cerebral circulation time after thrombectomy: a potential predictor of outcome after recanalization in acute stroke. *J Am Heart Assoc* 2022;11:e025853.
- Gado M, Eichling J, Grubb R, *et al*. Appraisal of the angiographic circulation time as an index of cerebral blood flow. *Radiology* 1975;115:107–12.
- Naraoka M, Matsuda N, Shimamura N, *et al*. Role of microcirculatory impairment in delayed cerebral ischemia and outcome after aneurysmal subarachnoid hemorrhage. *J Cereb Blood Flow Metab* 2022;42:186–96.
- Görlitz P, Hoelter P, Rösch J, *et al*. Ultra-early detection of microcirculatory injury as predictor of developing delayed cerebral ischemia after aneurysmal subarachnoid hemorrhage. *Clin Neuroradiol* 2018;28:501–7.
- Suzuki S, Kimura M, Souma M, *et al*. Cerebral microthrombosis in symptomatic cerebral vasospasm—a quantitative histological study in autopsy cases. *Neural Med Chir* 1990;30:309–16.
- Friedrich B, Müller F, Feiler S, *et al*. Experimental subarachnoid hemorrhage causes early and long-lasting microarterial constriction and microthrombosis: an in-vivo microscopy study. *J Cereb Blood Flow Metab* 2012;32:447–55.
- Powers WJ, Rabinstein AA, Ackerson T, *et al*. Guidelines for the early management of patients with acute ischemic stroke: 2019 update to the 2018 guidelines for the early management of acute ischemic stroke: a guideline for healthcare professionals from the American heart Association/American stroke association. *Stroke* 2019;50:e344–418.
- Ng FC, Churilov L, Yassi N, *et al*. Prevalence and significance of impaired microvascular tissue reperfusion despite macrovascular angiographic reperfusion (no-reflow). *Neurology* 2022;98:e790–801.
- Belayev L, Pinard E, Nallet H, *et al*. Albumin therapy of transient focal cerebral ischemia: in vivo analysis of dynamic microvascular responses. *Stroke* 2002;33:1077–84.
- Ito U, Hakamata Y, Kawakami E, *et al*. Temporary [corrected] cerebral ischemia results in swollen astrocytic end-feet that compress microvessels and lead to delayed [corrected] focal cortical infarction. *J Cereb Blood Flow Metab* 2011;31:328–38.
- Soares BP, Tong E, Hom J, *et al*. Reperfusion is a more accurate predictor of follow-up infarct volume than recanalization: a proof of concept using CT in acute ischemic stroke patients. *Stroke* 2010;41:e34–40.
- Liebeskind DS, Bracard S, Guillemin F, *et al*. eTICI reperfusion: defining success in endovascular stroke therapy. *J Neurointerv Surg* 2019;11:433–8.
- Tan JC, Dillon WP, Liu S, *et al*. Systematic comparison of perfusion-CT and CT-angiography in acute stroke patients. *Ann Neurol* 2007;61:533–43.
- Fang K, Zhao J, Luo M, *et al*. Quantitative analysis of renal blood flow during thoracic endovascular aortic repair in type B aortic dissection using *syngo* iFlow. *Quant Imaging Med Surg* 2021;11:3726–34.
- Hacke W, Kaste M, Bluhmki E, *et al*. Thrombolysis with alteplase 3 to 4.5 hours after acute ischemic stroke. *N Engl J Med* 2008;359:1317–29.
- Dalkara T, Arsava EM. Can restoring incomplete microcirculatory reperfusion improve stroke outcome after thrombolysis? *J Cereb Blood Flow Metab* 2012;32:2091–9.

- 21 Taskiran-Sag A, Yemisci M, Gursoy-Ozdemir Y, *et al.* Improving microcirculatory reperfusion reduces parenchymal oxygen radical formation and provides neuroprotection. *Stroke* 2018;49:1267–75.
- 22 Bai X, Yu F, Tian Q, *et al.* Clinical significance and influencing factors of microvascular tissue reperfusion after macrovascular recanalization. *Transl Stroke Res* 2022;50.
- 23 Tan Z, Parsons M, Bivard A, *et al.* Optimal tissue reperfusion estimation by computed tomography perfusion Post-Thrombectomy in acute ischemic stroke. *Stroke* 2021;52:e760–3.
- 24 Ng FC, Churilov L, Yassi N, *et al.* Microvascular dysfunction in blood-brain barrier disruption and hypoperfusion within the infarct posttreatment are associated with cerebral edema. *Stroke* 2022;53:1597–605.
- 25 Little JR, Kerr FWL, Sundt TM. Microcirculatory obstruction in focal cerebral ischemia: an electron microscopic investigation in monkeys. *Stroke* 1976;7:25–30.
- 26 Hall CN, Reynell C, Gesslein B, *et al.* Capillary pericytes regulate cerebral blood flow in health and disease. *Nature* 2014;508:55–60.
- 27 Rustenhoven J, Jansson D, Smyth LC, *et al.* Brain pericytes as mediators of neuroinflammation. *Trends Pharmacol Sci* 2017;38:291–304.
- 28 Regenhardt RW, Ethernan MR, Das AS, *et al.* Infarct growth despite endovascular thrombectomy recanalization in large vessel occlusive stroke. *J Neuroimaging* 2021;31:155–64.
- 29 LeCouffe NE, Kappelhof M, Treurniet KM, *et al.* 2B, 2C, or 3: what should be the angiographic target for endovascular treatment in ischemic stroke? *Stroke* 2020;51:1790–6.
- 30 Renú A, Millán M, San Román L, *et al.* Effect of intra-arterial alteplase vs placebo following successful thrombectomy on functional outcomes in patients with large vessel occlusion acute ischemic stroke: the choice randomized clinical trial. *JAMA* 2022;327:826–35.