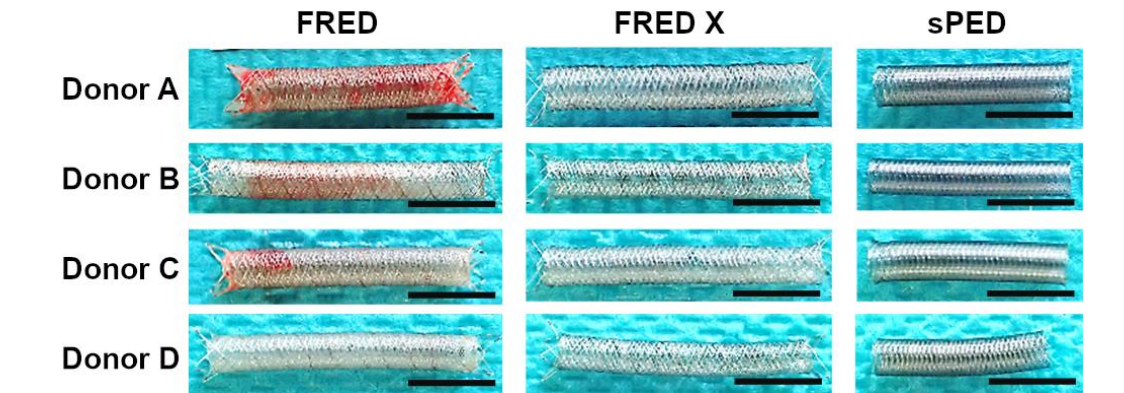
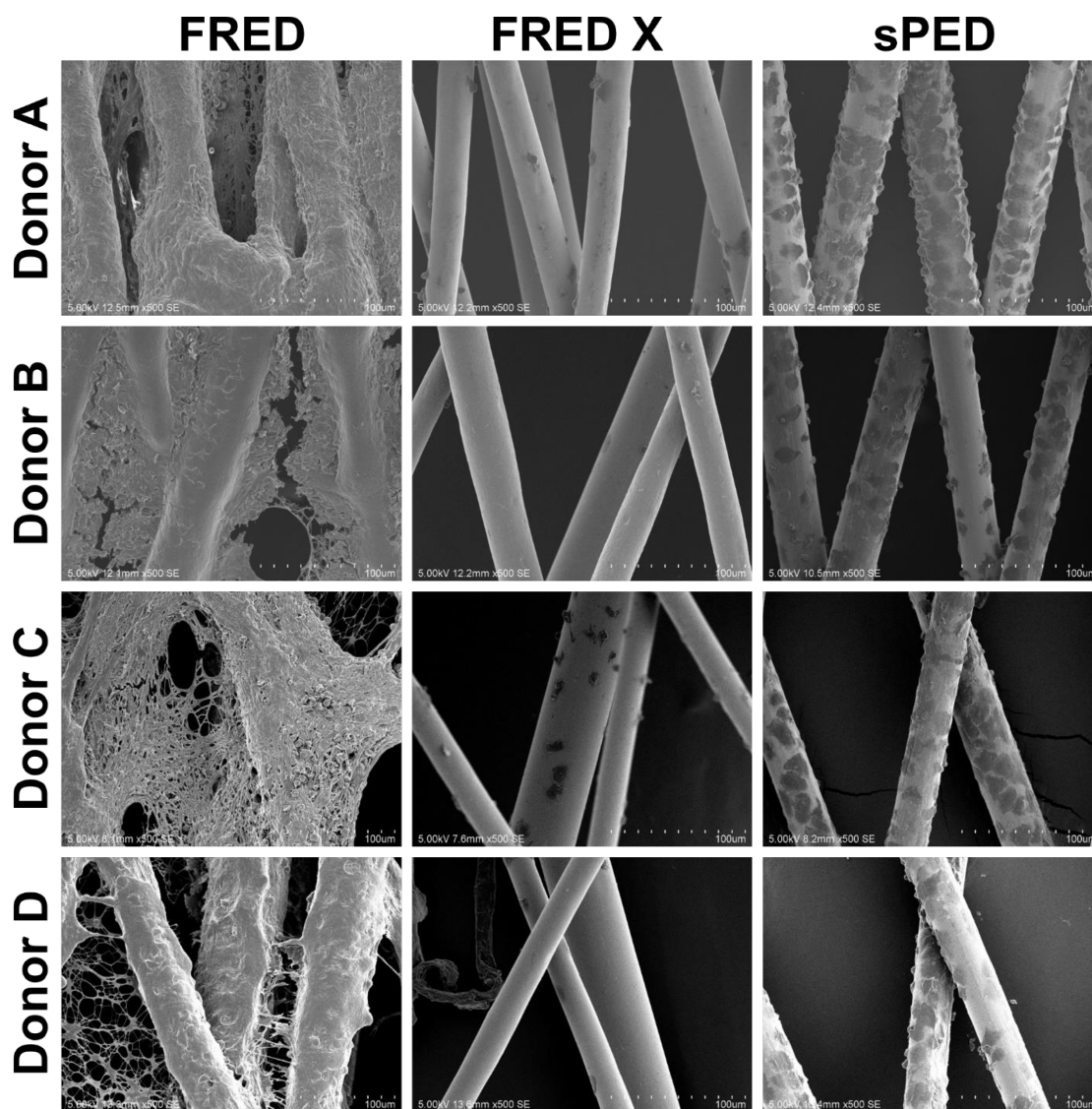


Poly(2-methoxyethyl acrylate) (PMEA) improves the thromboresistance of FRED flow diverters:
A thrombogenic evaluation of flow diverters with human blood under flow conditions

SUPPLEMENTAL MATERIALS



Supplemental Figure 1. Visual observation of blood coagulation on each flow diverter. Scale bars: 1 cm. FRED, Flow Redirection Endoluminal Device; FRED X, FRED with X Technology; sPED, Pipeline Flex with Shield Technology.



Supplemental Figure 2. Scanning electron microscope observation of blood coagulation after circulation. Scale bars: 100 µm. FRED, Flow Redirection Endoluminal Device; FRED X, FRED with X Technology; sPED, Pipeline Flex with Shield Technology.