

Supplementary materials

Supplemental Figure I. Flowchart of patient selection.

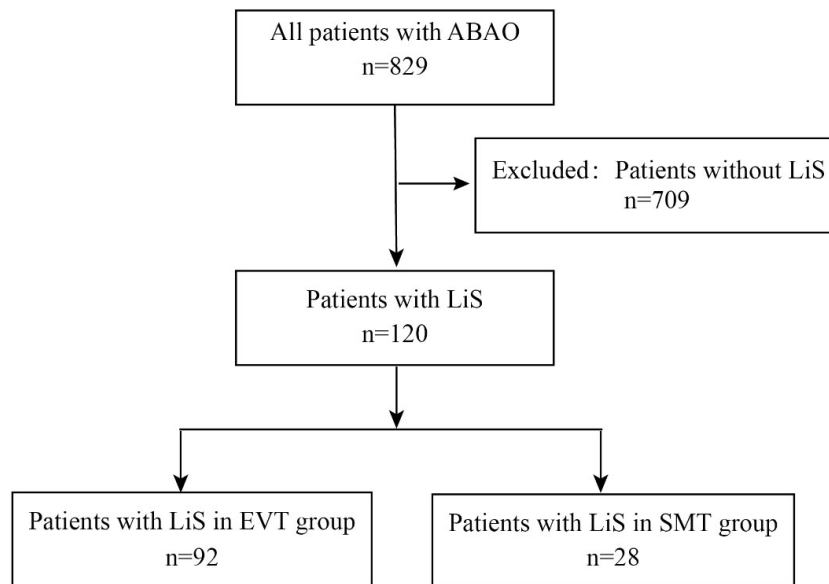
Supplemental Figure II. Kaplan-Meier curves Estimates of the Probability of Death during the 1-Year Follow-up.

Supplemental Table I. the baseline characteristics and outcomes of LiS subgroups (incomplete, classical).

Supplemental Figure I. Flowchart of patient selection.

This figure shows the enrollment information of patients in the present study.

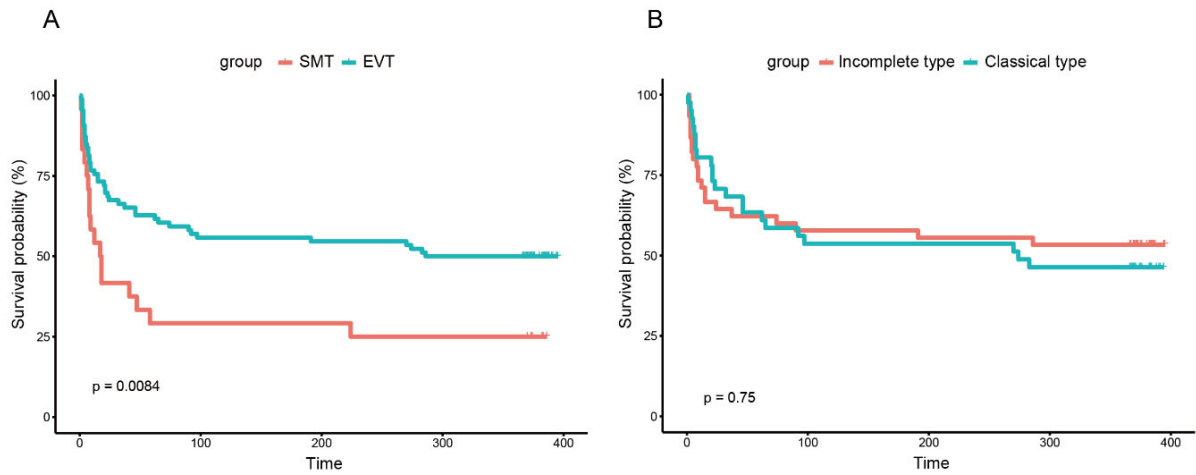
Abbreviations: ABAO, acute basilar artery occlusion; LiS, Locked-in syndrome; EVT, endovascular therapy; SMT, standard medical treatment.



Supplemental Figure II. Kaplan-Meier curves Estimates of the Probability of Death during the 1-Year Follow-up.

Patients in SMT group versus EVT group (A), Patients in Incomplete LiS versus Classical LiS (B).

Abbreviations: LiS, Locked-in syndrome; EVT, endovascular treatment, SMT, standard medical treatment.



Supplemental Table I. the baseline characteristics and outcomes of LiS subgroups (incomplete, classical).

Variables	SMT group		P value	Variables	EVT group		P value	
	Incomplete(n=14)	Classical(n=14)			Incomplete(n=49)	Classical(n=43)		
age (mean (SD)),y	67.00 (13.00)	66.00 (10.00)	0.852	Age, y, median (IQR)	65.00 74.00	(55.00- 75.00)	66.00 (59.00- 75.00)	0.462
Sex, male, n (%)	11 (78.6)	9 (64.3)	0.676	Sex, male, n (%)	36 (73.5)		35 (81.4)	0.513
SBP (mean (SD))	168.00 (32.00)	156.00 (19.00)	0.23	SBP (mean (SD))	155.00 (25.00)		152.00 (24.00)	0.595
Smoking (%)	5 (35.7)	2 (14.3)	0.383	Smoking (%)	18 (36.7)		14 (32.6)	0.841
NIHSS baseline (mean (SD))	17.00 (3.00)	26.00 (2.00)	<0.001	NIHSS baseline (median (IQR))	19.00 22.00	(16.00- 22.00)	28.00 (25.00- 29.00)	<0.001
pc-ASPECTS baseline (median (IQR))	7.00 (6.00- 8.00)	8.00 (7.00- 9.00)	0.112	pc-ASPECTS baseline (median (IQR))	8.00 (7.00- 9.00)		8.00 (7.00- 8.00)	0.076
PC-CS Score (median (IQR))	4.00 (2.00- 6.00)	7.00 (5.00- 8.00)	0.169	PC-CS Score (median (IQR))	5.00 (3.00- 6.00)		4.00 (3.00- 6.00)	0.141
BATMAN Score (median (IQR))	5.00 (3.00- 6.00)	6.00(5.00- 7.00)	0.147	BATMAN Score (median (IQR))	5.00 (3.00- 6.00)		4.00 (3.00- 6.00)	0.214
GCS score, median (IQR)	8.00 (7.00- 10.00)	7.00 (7.00, 8.00)	0.014	GCS score, median (IQR)	9.00 (8.00- 10.00)		6.00 (6.00- 7.00)	<0.001
Medical history, n (%)				Medical history, n (%)				
Hypertension	12 (85.7)	10 (71.4)	0.645	Hypertension	37 (75.5)		31 (72.1)	0.893
Hyperlipidemia	3 (21.4)	6 (42.9)	0.418	Hyperlipidemia	17 (34.7)		14 (32.6)	1
Diabetes mellitus	3 (21.4)	2 (14.3)	1	Diabetes mellitus	10 (20.4)		9 (20.9)	1
Atrial fibrillation	2 (14.3)	2 (14.3)	1	Atrial fibrillation	7 (14.3)		7 (16.3)	1
Pre-mRS, baseline, n (%)			0.441	Pre-mRS, baseline, n (%)				0.24
0	3 (75.0)	3 (42.9)		0	5 (71.4)		4 (50.0)	

1	0 (0)	2 (28.6)		1	1 (14.3)	4 (50.0)	
2	1 (25.0)	2 (28.6)		2	1 (14.3)	0 (0.0)	
Coronary heart disease	2 (14.3)	1 (7.1)	1	Coronary heart disease	3 (6.1)	8 (18.6)	0.129
Biochemical variables, (median (IQR))				Biochemical variables, (median (IQR))			
Triglyceride (median (IQR)), mmol/l	1.22 (0.88- 1.87)	1.38 (0.87- 1.91)	1	Triglyceride (median (IQR)), mmol/l	1.04 (0.81- 1.81)	1.21 (0.71- 2.06)	0.793
Total cholesterol (median (IQR)), mmol/l	4.63 (4.05- 4.80)	4.58 (4.03- 5.72)	0.624	Total cholesterol (median (IQR)), mmol/l	4.68 (4.16- 5.57)	4.58 (3.49- 5.99)	0.608
Admission glucose (median (IQR))	7.00 (5.84- 7.98)	6.70 (5.81- 7.54)	0.977	Admission glucose (median (IQR))	7.18 (6.16- 8.33)	7.32 (6.49- 9.25)	0.352
Cause of stroke, n (%)			0.828	Cause of stroke, n (%)			0.765
LAA	12 (85.7)	11 (78.6)		LAA	39 (79.6)	34 (79.1)	
CE	1 (7.1)	2 (14.3)		CE	7 (14.3)	7 (16.3)	
Other causes	1 (7.1)	1 (7.1)		Other causes	3 (6.1)	2 (4.7)	
General anesthesia, n (%)	NA	NA	NA	General anesthesia, n (%)	30 (61.2)	29 (69.0)	0.436
Intravenous thrombolysis, n (%)	2 (14.3)	3 (21.4)	1	Intravenous thrombolysis, n (%)	13 (26.5)	10 (23.3)	0.904
pneumonia, n (%)	12 (85.7)	10 (71.4)	0.645	pneumonia, n (%)	34 (69.4)	38 (88.4)	0.028
Time variables, median, (IQR), min				Time variables, median, (IQR), min			
OTI time	184.00(90.75-331.00)	217.00 (70.50-566.00)	0.713	OTI time	228.00(102.00-390.00)	309.00(207.00-424.00)	0.054
OTT time	212.50 (118.00-365.50)	253.00 (132.75-607.25)	0.581	OTT time	265.00(147.00-435.00)	350.00(245.00-447.00)	0.071

OTP time	NA	NA	NA	OTP time	329.00 (262.00-491.00)	385.00 (244.00-495.00)	0.614
PTR time	NA	NA	NA	PTR time	111.00 (85.00-162.00)	98.00 (76.00-141.00)	0.296
Occlusion site, n (%)			0.828	Occlusion site, n (%)			0.334
Distal BA	1 (7.1)	1 (7.1)		Distal BA	9 (18.4)	13 (30.2)	
Middle BA	11 (78.6)	12 (85.7)		Middle BA	25 (51.0)	21 (48.8)	
Proximal BA	2 (14.3)	1 (7.1)		Proximal BA	15 (30.6)	9 (20.9)	
mTICI score 2b/3, n (%)	NA	NA	NA	mTICI score 2b/3, n (%)	37 (75.5)	35 (81.4)	0.668
Clinical outcomes, n (%)				Clinical outcomes, n (%)			
mRS 0-3 at 90 days	1 (7.1)	2 (14.3)	1	mRS 0-3 at 90 days	17 (34.7)	11 (25.6)	0.471
mRS 0-2 at 90 days	1 (7.1)	0 (0.0)	1	mRS 0-2 at 90 days	16 (32.7)	7 (16.3)	0.117
mRS 0-1 at 90 days	1 (7.1)	0 (0.0)	1	mRS 0-1 at 90 days	13 (26.5)	6 (14.0)	0.219
Mortality at 90 days	8 (57.1)	9 (64.3)	1	Mortality at 90 days	19 (38.8)	19 (44.2)	0.754
sICH	0	0	NA	sICH	2 (4.2)	5 (11.6)	0.347

Abbreviation: BA, basilar artery; CE, cardioembolism; EVT, endovascular treatment; IQR, interquartile range; LAA, large artery atherosclerosis; LiS, locked in syndrome; mRS, modified Rankin Scale; mTICI, modified Thrombolysis in Cerebral Infarction; NIHSS, National Institutes of Health Stroke Scale; OTI, onset to imaging; OTP, onset to puncture; OTT, onset to treatment; pc-ASPECTS, posterior circulation Alberta Stroke Program Early Computed Tomography Score; PC-CS score, posterior circulation collateral system score; PTR, puncture to recanalization; SBP, systolic blood pressure; sICH, Symptomatic intracranial hemorrhage; SMT, standard medical treatment; TIA, Transient Ischemic Attack.